


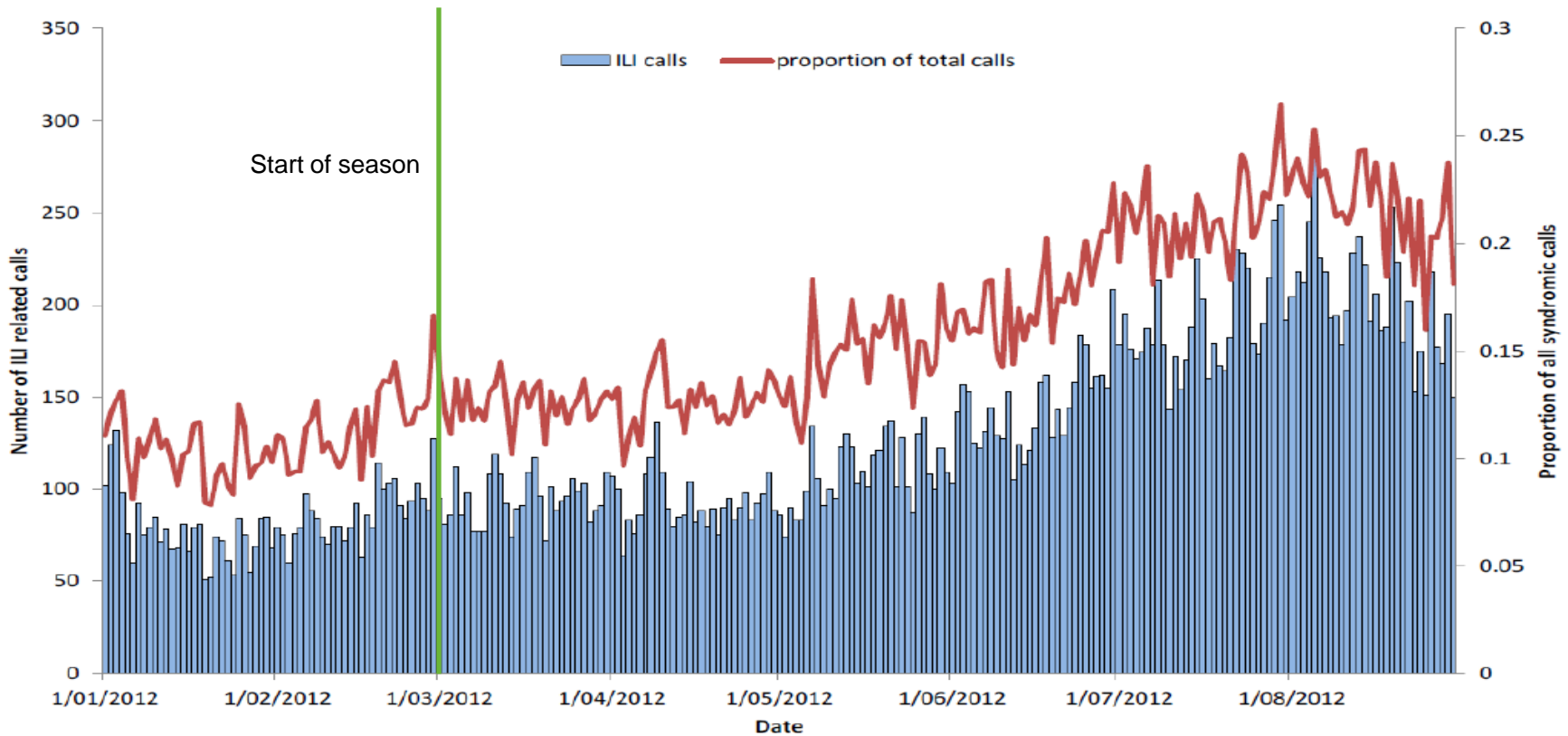
2012 Influenza Immunisation Programme

2012 Seasonal Influenza Programme Summary

- Normal flu season
 - Eligibility criteria and vaccine were the same as previous years
 - Highlights
 - Extension
 - Pharmacist evaluation
-
- 

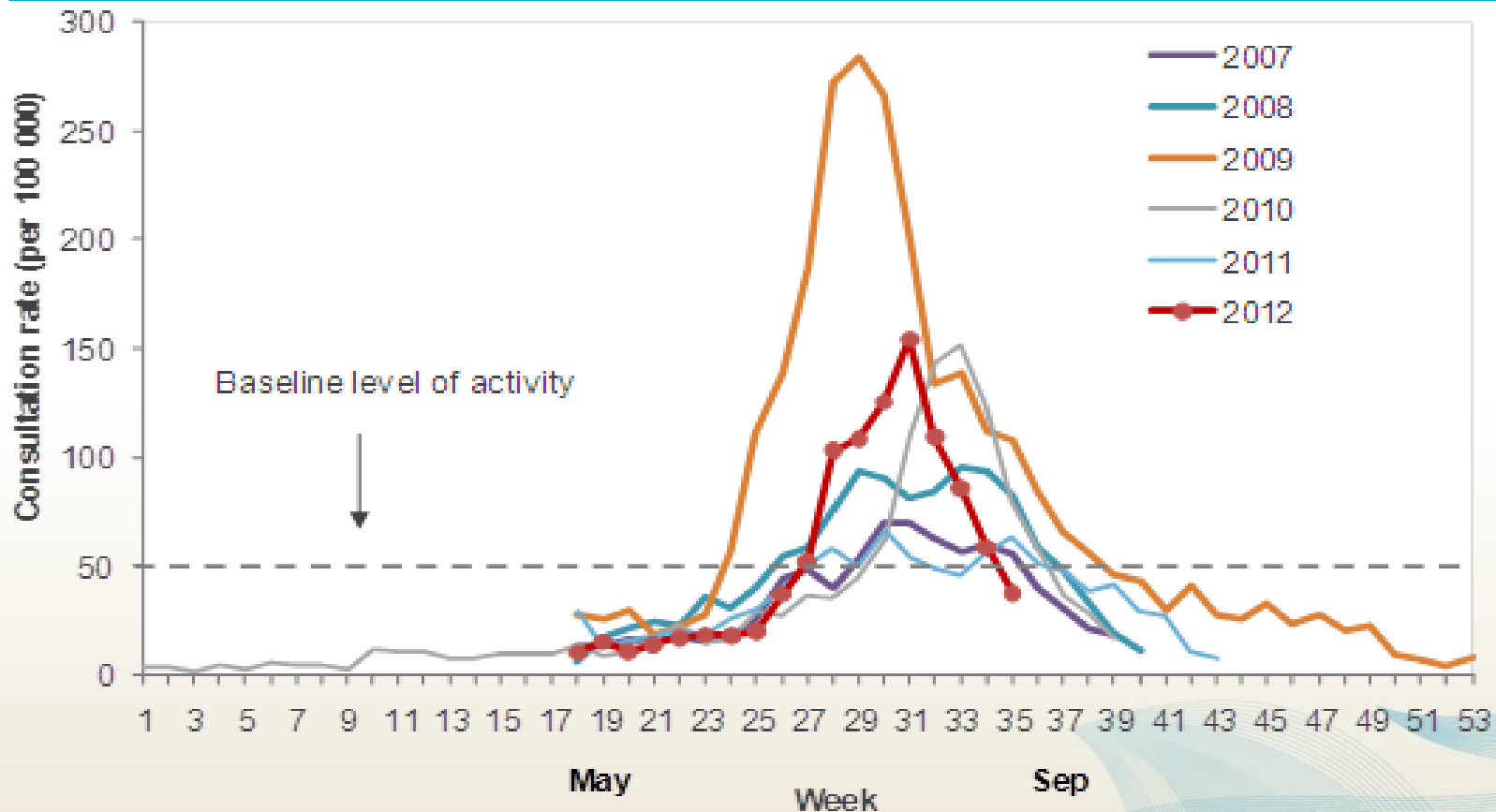
Influenza like Illness calls to Healthline during 2012

Figure 6: Healthline call volumes – daily – 1 January 2012 to 30 August 2012



Note: data go up to 30 August but this is not visible in the x-axis labels.

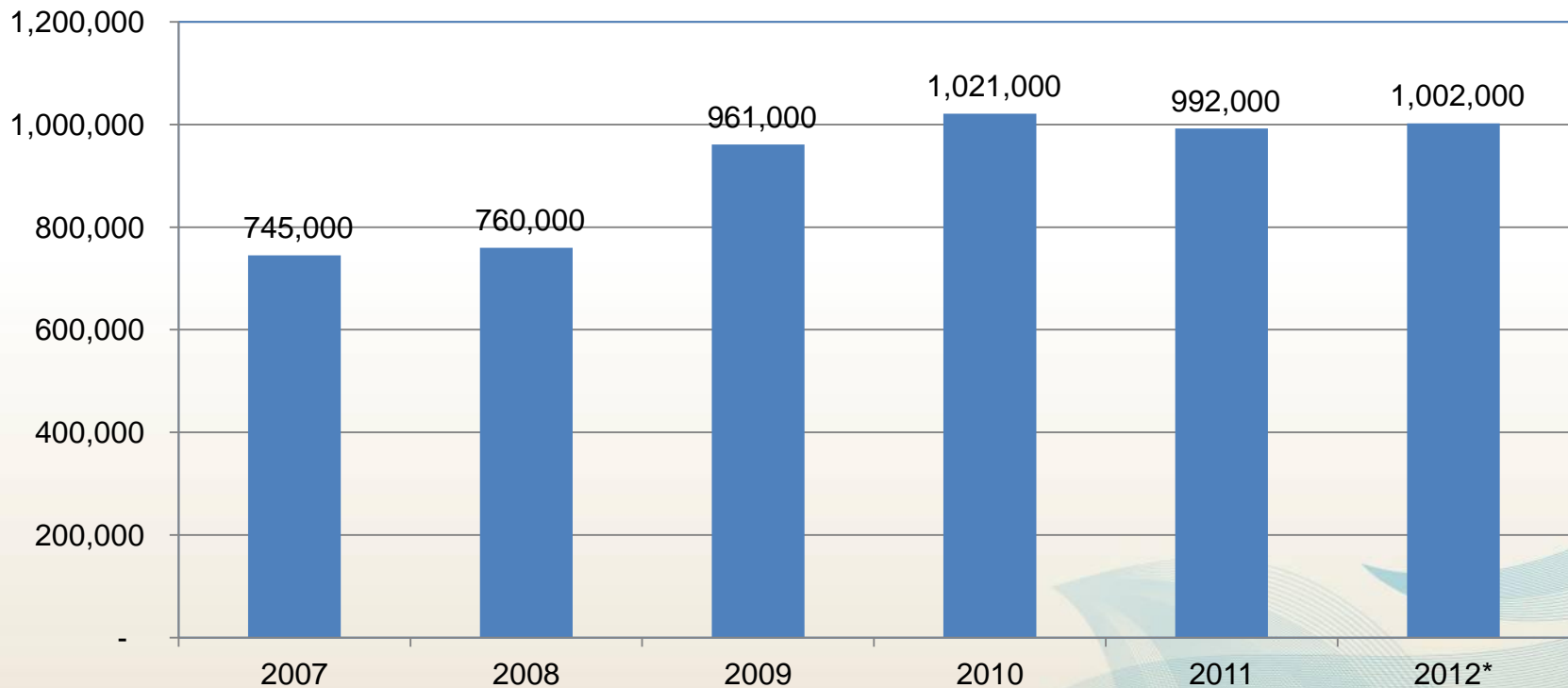
Influenza-Like-Illness in Primary Care



A weekly rate <50 ILI consultation per 100 000 patient population is considered baseline activity. A rate of 50-249 is considered indicative of normal seasonal influenza activity, and a rate of 250-399 indicative of higher than expected influenza activity. A rate of >400 ILI consultations per 100 000 patient population indicates an epidemic level of influenza.

Vaccine distribution

Annual Seasonal Influenza Vaccine Distribution 2007 - 2012*



* Note: distribution figures for 2012 have not yet been finalised as some of the distributed vaccines will be returned as unused stock.

Extension of the 2012 Seasonal Influenza Programme

- The Seasonal Influenza Programme was scheduled to end on 31 July 2012.
- On 24 July 2012 it was announced that the season would be extended to 31 August 2012.
- This followed increased reporting in influenza-like-illnesses in various DHBs.
- Vaccine usage.

Planning for 2013

- National Immunisation Register
- Guidelines for influenza pharmacies
- National Influenza Specialist Group